

TMA

10-1B

CHIHUAHUA, MEXICO

GEN DIV P A ROBERTO FIERRO VILLALOBOS INTL

JEPPesen

17 SEP 10

*ATIS
 127.9

*CHIHUAHUA Approach
 121.0

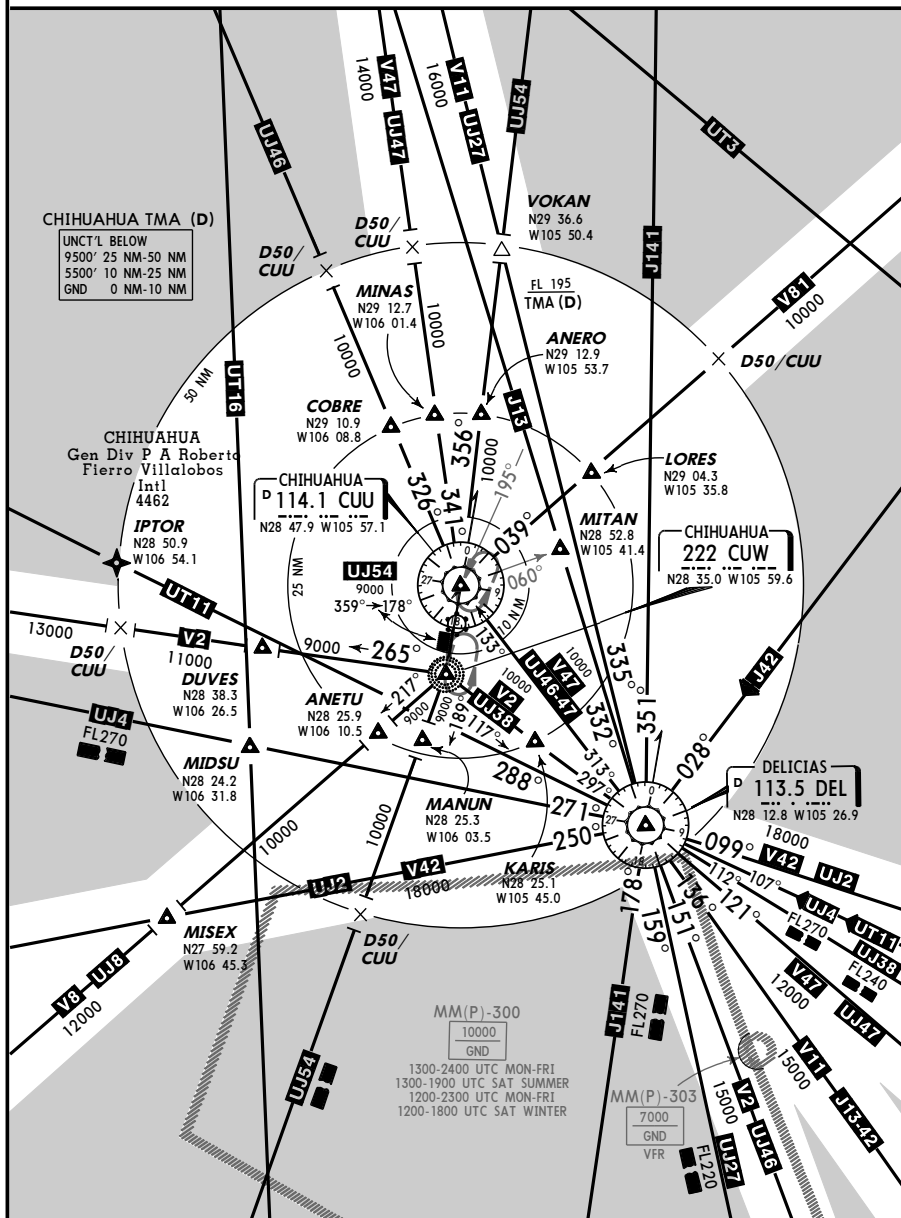
SPEED RESTRICTIONS WITHIN MEXICO AIRSPACE

Maximum IAS unless otherwise depicted or authorized by ATC

At or below 3000' AGL within 10NM of any airport.....200 KTS
 At or below 10000' within Mexico Airspace.....250 KTS
 At or below 10000' AGL within 30NM of any airport.....250 KTS

WITHIN CHIHUAHUA TMA

At or below 7500' of Gen Div P A Roberto Fierro
 Villalobos Intl Apt and within 10NM of CUU VORDME.....200 KTS
 At or below 18000' within 30NM of CUU VORDME.....250 KTS



CHANGES: Duto Int renamed Iptor (Delicias R-288).

© JEPPESEN, 2002, 2010. ALL RIGHTS RESERVED.

MMCU/CUU

JEPPesen

7 NOV 03

10-1R

CHIHUAHUA, MEXICO

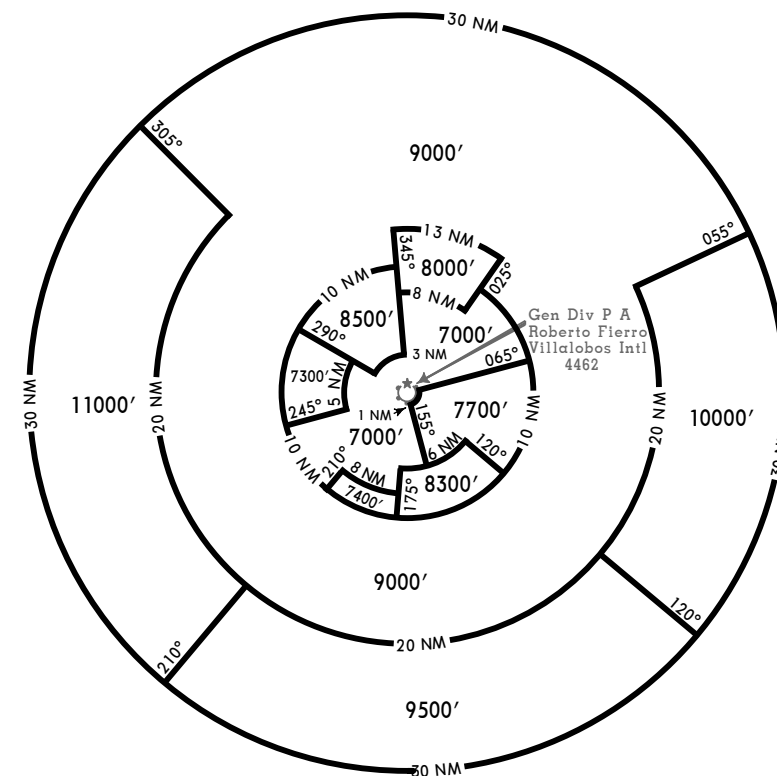
GEN DIV P A ROBERTO FIERRO VILLALOBOS INTL

IFR MINIMUM VECTORING ALTITUDES

(These are the lowest MIVAs that can be assigned by the controller in a sector when RADAR control procedures (vectors) are applied, without affecting routes and procedures with lower minimums).

MAXIMUM SPEED:

250 kts IAS within 30 NM of CUU VOR and at or below 18000'.
 200 kts IAS within 10 NM of CUU VOR and at or below 7500'.

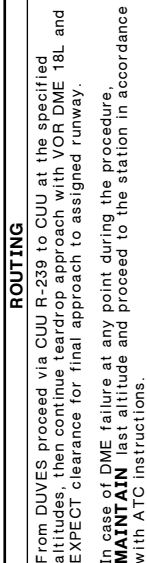


CHANGES: New chart.

© JEPPESEN SANDERSON, INC., 2003. ALL RIGHTS RESERVED.

ARRIVAL

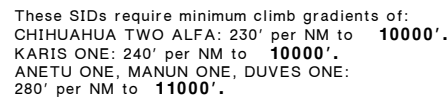
DUVES ONE [DUVES1]



© JEPPESEN SANDERSON, INC., 2003. ALL RIGHTS RESERVED.

SID

ANETU ONE (ANETU1), CHIHUAHUA TWO ALFA (CUU2A),
DUVES ONE (DUVES1), KARIS ONE (KARIS1), MANUN ONE (MANUN1)



A MINIMUM CROSSING ALTITUDES			
MRF	V-81		9000
DEL	V-47	UJ-46-47	9000
DEL	V-2	UJ-38	9000
CUL		UJ-54	9000
CHX	V-8	UJ-8	11000
HMO	V-2		11000
CJS		UJ-46	10000
CJS	V-47	UJ-47	9000
CJS		UJ-54	9000

© JEPPESEN SANDERSON, INC., 2003, 2004. ALL RIGHTS RESERVED

MMCU/CUU
GEN DIV P A ROBERTO
FIERRO VILLALOBOS INTL

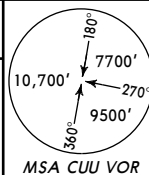
JEPPesen
10-3A 2 JUL 04
Eff 8 Jul

CHIHUAHUA, MEXICO
SID

Apt Elev
4462'
Trans level: FL195 Trans alt: 18500'

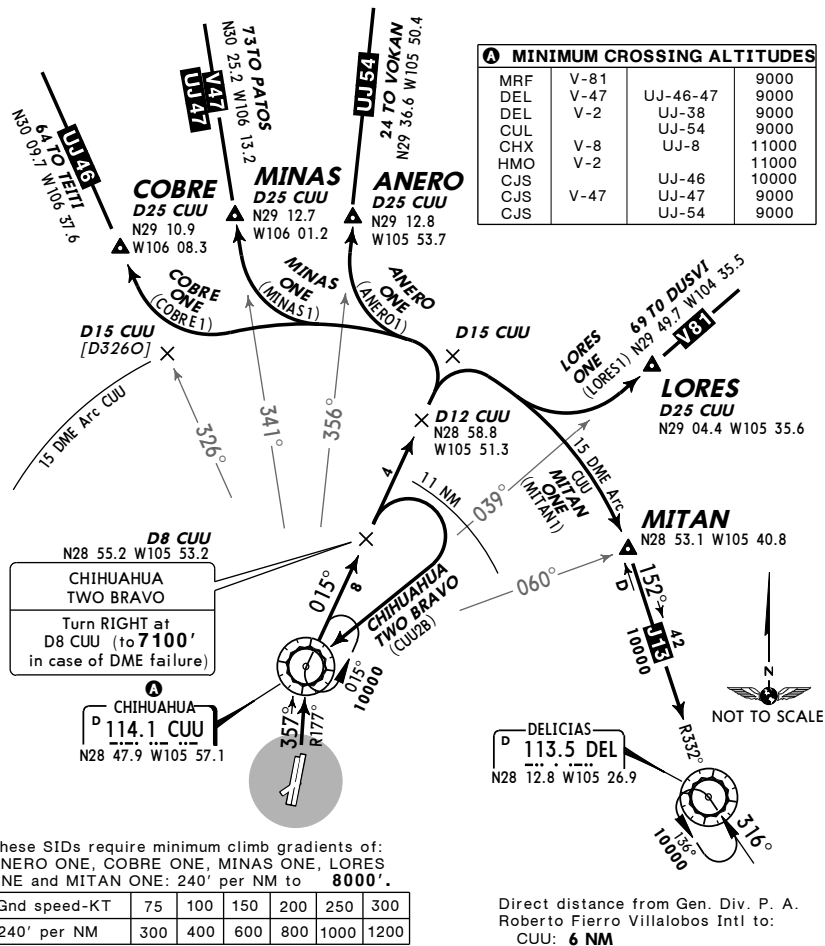
DEPARTURES RWY 36R

ANERO ONE (ANERO1), CHIHUAHUA TWO BRAVO (CUU2B),
COBRE ONE (COBRE1), LORES ONE (LORES1), MINAS ONE (MINAS1),
MITAN ONE (MITAN1)



MINIMUM CROSSING ALTITUDES

MRF	V-81	9000
DEL	V-47	9000
DEL	V-2	9000
CUL	UJ-38	9000
CHX	UJ-54	9000
HMO	V-8	11000
CJS	V-2	11000
CJS	UJ-46	10000
CJS	UJ-47	9000
CJS	UJ-54	9000



These SIDs require minimum climb gradients of:
ANERO ONE, COBRE ONE, MINAS ONE, LORES
ONE and MITAN ONE: 240' per NM to 8000'.

Gnd speed-KT	75	100	150	200	250	300
240' per NM	300	400	600	800	1000	1200

Direct distance from Gen. Div. P. A.
Roberto Fierro Villalobos Intl to:
CUU: 6 NM

SID	INITIAL CLIMB
ANERO ONE COBRE ONE MINAS ONE	Climb on CUU R-177, turn RIGHT and intercept CUU R-015 outbound to D12 CUU, turn LEFT and continue on 15 DME Arc CUU to intercept the corresponding radial from CUU to ANERO, COBRE or MINAS, then continue on assigned route or in accordance with ATC instructions.
CHIHUAHUA TWO BRAVO	Climb on CUU R-177, turn RIGHT and intercept CUU R-015 outbound to D8 CUU (to 7100', in case of DME failure) make a tear drop turn to the RIGHT within 11 NM to CUU and cross CUU at the assigned MCA or in accordance with ATC instructions.
LORES ONE	Climb on CUU R-177, turn RIGHT and intercept CUU R-015 outbound to D12 CUU, turn RIGHT and continue on 15 DME Arc CUU to intercept CUU R-039 to LORES, then continue on assigned route or in accordance with ATC instructions.
MITAN ONE	Climb on CUU R-177, turn RIGHT and intercept CUU R-015 outbound to D12 CUU, turn RIGHT and continue on 15 DME Arc CUU to MITAN, then continue on assigned route or in accordance with ATC instructions.

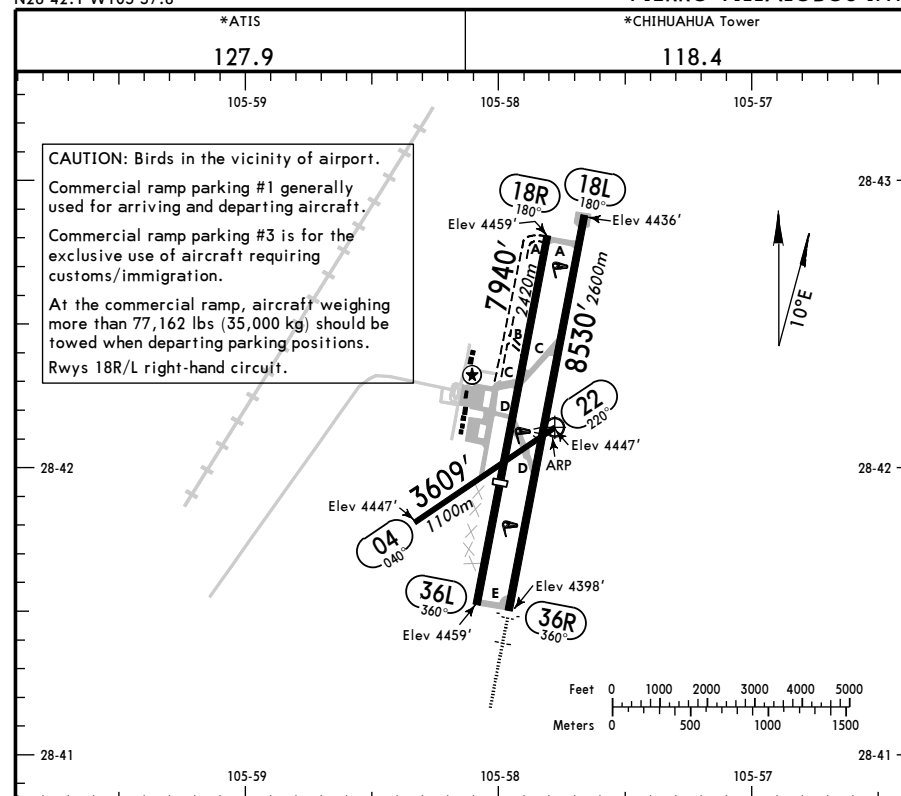
CHANGES: CHIHUAHUA TWO revised.

© JEPPESEN SANDERSON, INC., 2003, 2004. ALL RIGHTS RESERVED.

MMCU/CUU
Apt Elev 4462'
N28 42.1 W105 57.8

JEPPesen
10 JUL 09 10-9

CHIHUAHUA, MEXICO
GEN DIV P A ROBERTO
FIERRO VILLALOBOS INTL



ADDITIONAL RUNWAY INFORMATION					
RWY		USABLE LENGTHS			
		Threshold	Landing Beyond	TAKE-OFF	WIDTH
04	22				98' 30m
18L					148' 45m
36R					148' 45m
18R	36L				148' 45m

1 Maximum weight of 33,069 lbs (15,000 kg).

2 VFR operations only. Weight bearing capacity of 33,069 lbs (15,000 kg).

TAKE-OFF		FOR FILING AS ALTERNATE	
1 & 2 Eng	Rwy 36R Authorized Only When CUU VOR Operating	Rwy 18L	
	500-1	1200-3	
3 & 4 Eng			

CHANGES: Lighting.

© JEPPESEN, 2000, 2009. ALL RIGHTS RESERVED.

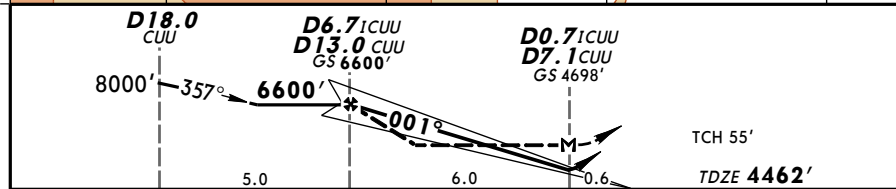
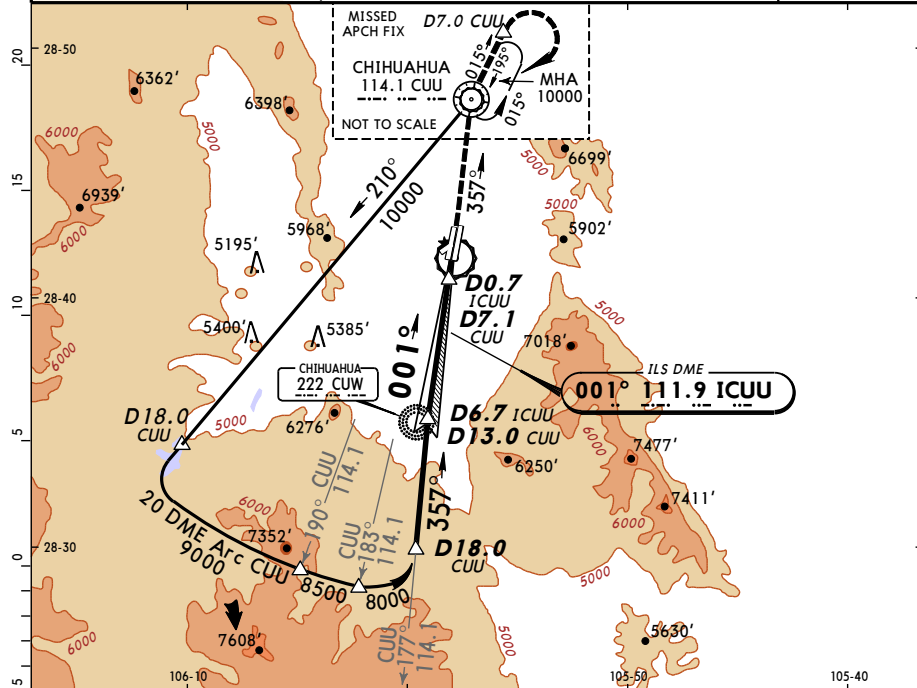
MMCU/CUU
GEN DIV P A ROBERTO
FIERRO VILLALOBOS INTL
10 JUL 09 (11-1) ILS DME 1 or LOC Rwy 36R

*ATIS 127.9		*CHIHUAHUA Approach (R) 121.0		*CHIHUAHUA Tower 118.4	
LOC ICUU	Final Apch Crs	GS D6.7 ICUU D13.0 CUU	ILS DA(H) (CONDITIONAL)	Apt Elev 4462' TDZE 4462'	
111.9	001°	6600' (2138')	4698' (236')		

MISSED APCH: Climb to CUU VOR inbound on R-177, continue climb outbound on CUU VOR R-015 to D7.0 CUU, make teardrop turn to the RIGHT within 10 NM to the minimum holding altitude.

Alt Set: MB (IN on req) TDZ Elev: 153 MB Trans level: FL 195 Trans alt: 18500'
1. Cross CUU VOR R-183 to intercept LOC.

MSA CUU VOR



Gnd speed-Kts	70	90	100	120	140	160	ALS F-1	CUU
GS	3.00°	377	484	538	646	753	861	114.1
MAP at D0.7 ICUU/D7.1 CUU or FAF to MAP	6.0	5:09	4:00	3:36	3:00	2:34	2:15	R-177

STRAIGHT-IN LANDING RWY36R				CIRCLE-TO-LAND			
ILS DA(H) 4698' (236')		LOC (GS out) MDA(H) 4880' (418')		Max Kts		MDA(H)	
FULL	ALS out	FULL	ALS out	90	120	140	165
A	1/2	3/4	1	5200' (738')-1			
B							
C							
D							
All Non Skd	DA(H) 4748' (286')	1 1/2					

CHANGES: Lighting.

© JEPPesen, 2008, 2009. ALL RIGHTS RESERVED.

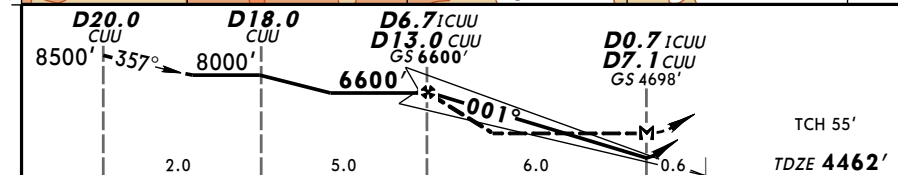
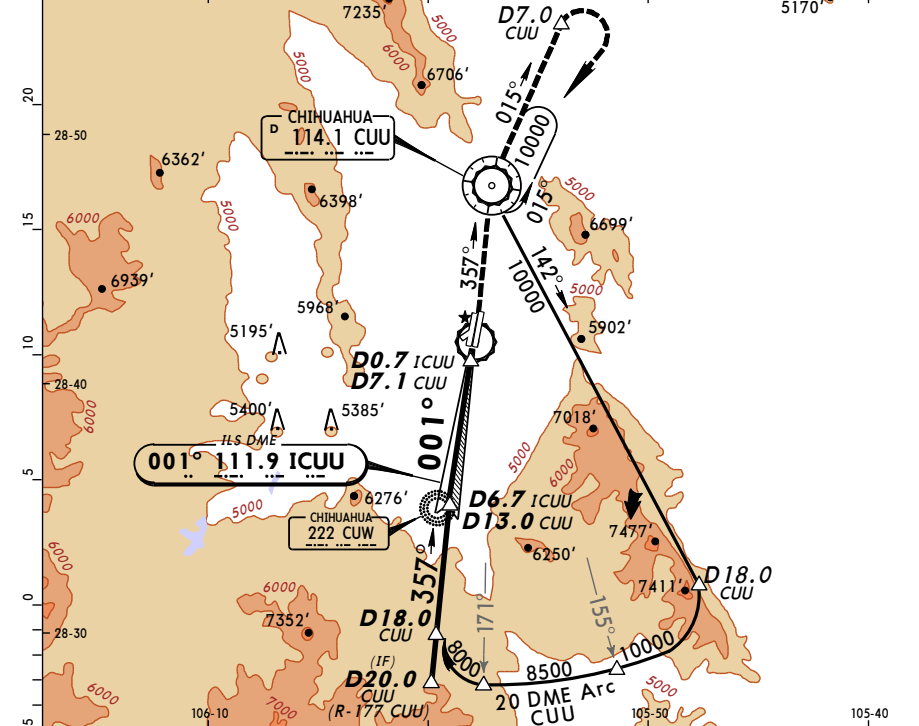
MMCU/CUU
GEN DIV P A ROBERTO
FIERRO VILLALOBOS INTL
10 JUL 09 (11-2) ILS DME 2 or LOC Rwy 36R

*ATIS 127.9		*CHIHUAHUA Approach (R) 121.0		*CHIHUAHUA Tower 118.4	
LOC ICUU	Final Apch Crs	GS D6.7 ICUU D13.0 CUU	ILS DA(H) (CONDITIONAL)	Apt Elev 4462' TDZE 4462'	
111.9	001°	6600' (2138')	4698' (236')		

MISSED APCH: Climb to CUU VOR inbound on R-177, continue climb outbound on CUU VOR R-015 to D7.0 CUU, make teardrop turn to the RIGHT within 10 NM to the minimum holding altitude.

Alt Set: MB (IN on req) TDZ Elev: 153 MB Trans level: FL 195 Trans alt: 18500'
1. Cross CUU VOR R-171 to intercept LOC.

MSA CUU VOR



Gnd speed-Kts	70	90	100	120	140	160	ALS F-1	CUU
GS	3.00°	377	484	538	646	753	861	114.1
MAP at D0.7 ICUU/D7.1 CUU or FAF to MAP	6.0	5:09	4:00	3:36	3:00	2:34	2:15	R-177

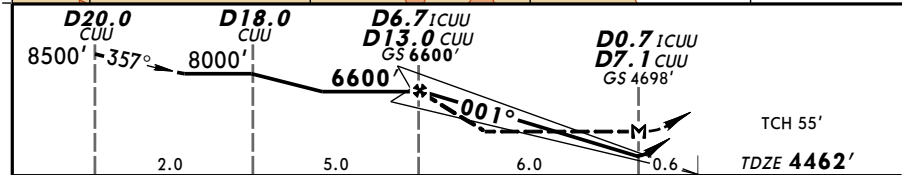
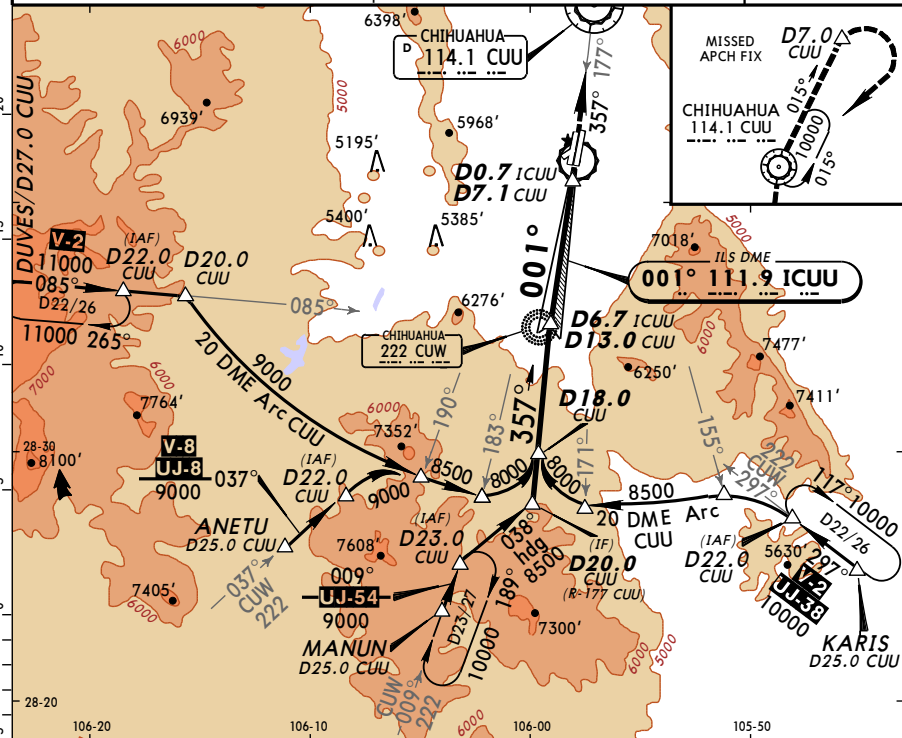
STRAIGHT-IN LANDING RWY36R				CIRCLE-TO-LAND			
ILS DA(H) 4698' (236')		LOC (GS out) MDA(H) 4820' (358')		Max Kts		MDA(H)	
FULL	ALS out	FULL	ALS out	90	120	140	165
A	1/2	3/4	1	5200' (738')-1			
B							
C							
D							
All Non Skd	DA(H) 4748' (286')	1 1/2					

CHANGES: Lighting.

© JEPPesen, 2008, 2009. ALL RIGHTS RESERVED.

MMCU/CUU
GEN DIV P A ROBERTO
FIERRO VILLALOBOS INTL
10 JUL 09 (11-3) ILS DME 3 or LOC Rwy 36R

*ATIS 127.9		*CHIHUAHUA Approach (R) 121.0		*CHIHUAHUA Tower 118.4	
LOC ICUU 111.9	Final Apch Crs 001°	GS D6.7 ICUU D13.0 CUU 6600' (2138')	ILS DA(H) (CONDITIONAL) 4698' (236')	Apt Elev 4462'	TDZE 4462'
MISSED APCH: Climb to CUU VOR inbound on R-177, continue climb outbound on CUU VOR R-015 to D7.0 CUU, make teardrop turn to the RIGHT within 10 NM to the minimum holding altitude.					
Alt Set: MB (IN on req) TDZ Elev: 153 MB Trans level: FL 195 Trans alt: 18500'					
1. Cross CUU VOR R-171 or R-183 to Intercept LOC.					

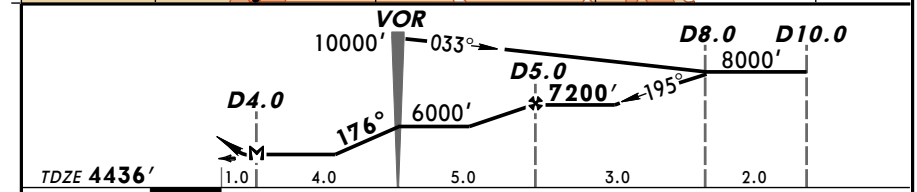
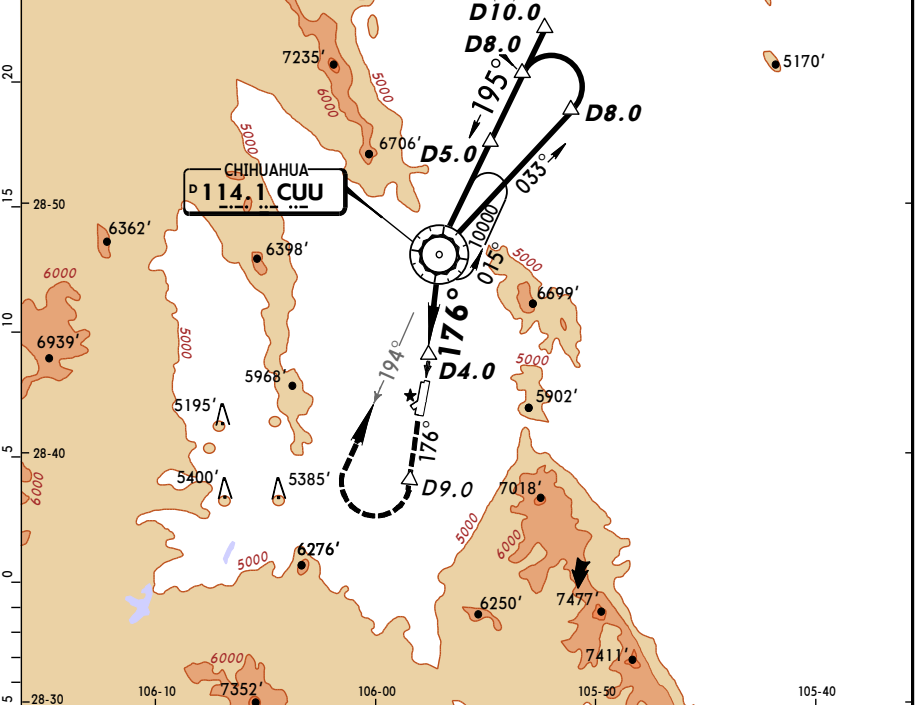


Gnd speed-Kts	70	90	100	120	140	160	ALS F-1	CUU
GS	3.00°	377	484	538	646	753	861	on 114.1
MAP at D0.7 ICUU/D7.1 CUU or FAF to MAP	6.0	5:09	4:00	3:36	3:00	2:34	2:15	R-177

STRAIGHT-IN LANDING RWY 36R				CIRCLE-TO-LAND	
ILS		LOC (GS out)		Max Kts	
DA(H) 4698' (236')		MDA(H) 4880' (418')		MDA(H)	
FULL		ALS out		90	
A	1/2	3/4	1	5200' (738')-1	
B				120	
C				140	
D				165	
All Non Skd		DA(H) 4748' (286')		1/2	
		3/4			

MMCU/CUU
GEN DIV P A ROBERTO
FIERRO VILLALOBOS INTL
10 JUL 09 (13-1) VOR DME 1 Rwy 18L

*ATIS 127.9		*CHIHUAHUA Approach (R) 121.0		*CHIHUAHUA Tower 118.4	
VOR CUU 114.1	Final Apch Crs 176°	Minimum Alt D5.0 7200' (2764')	MDA(H) 5060' (624')	Apt Elev 4462'	TDZE 4436'
MISSED APCH: Climb outbound on CUU VOR R-176 to D9.0, RIGHT teardrop turn within 11 NM to CUU VOR at the minimum holding altitude.					
Alt Set: MB (IN on req) TDZ Elev: 152 MB Trans level: FL 195 Trans alt: 18500'					
MSA CUU VOR					



Gnd speed-Kts	70	90	100	120	140	160	REIL	CUU
MAP at D4.0 or VOR to MAP	4.0	3:26	2:40	2:24	2:00	1:43	1:30	on 114.1

STRAIGHT-IN LANDING RWY 18L				CIRCLE-TO-LAND	
MDA(H) 5060' (624')		Max Kts		MDA(H)	
		90		5200' (738')-1	
A	1			120	
B				140	
C	1 1/2			165	
D	1 3/4			5200' (738')-2 1/4	

MMCU/CUU
GEN DIV P A ROBERTO
FIERRO VILLALOBOS INTL

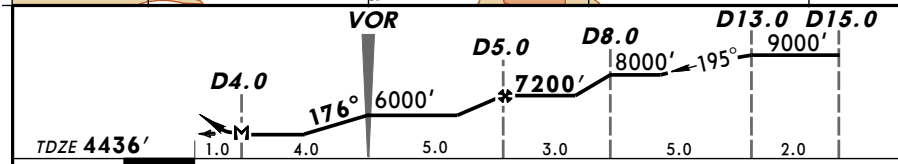
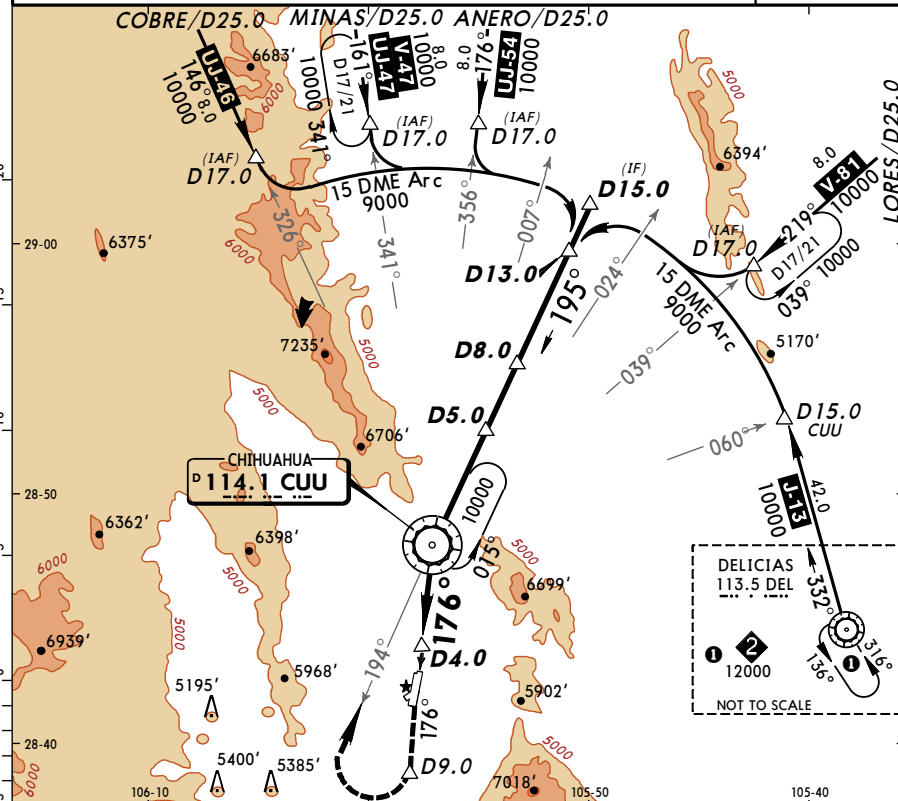
JEPPesen
10 JUL 09 (13-2)

CHIHUAHUA, MEXICO
VOR DME 2 Rwy 18L

*ATIS		*CHIHUAHUA Approach (R)		*CHIHUAHUA Tower	
127.9		121.0		118.4	
VOR CUU	Final Apch Crs	Minimum Alt	MDA(H)	Apt Elev	TDZE
114.1	176°	7200' (2764')	5060' (624')	4462'	4436'

MISSED APCH: Climb outbound on CUU VOR R-176 to D9.0, RIGHT teardrop turn within 11 NM to CUU VOR at the minimum holding altitude.

Alt Set: MB (IN on req) TDZ Elev: 152 MB Trans level: FL 195 Trans alt: 18500' MSA CUU VOR



Gnd speed-Kts		70	90	100	120	140	160	REIL PAPI-L	<div>CUU on 114.1 R-176</div>	D9.0
MAP at D4.0 or										
VOR to MAP		4.0	3:26	2:40	2:24	2:00	1:43			
STRAIGHT-IN LANDING RWY 18L								CIRCLE-TO-LAND		
MDA(H) 5060' (624')								MDA(H)		
A	1							Max Kts	5200' (738') - 1	
B								90	5200' (738') - 2	
C								120	5200' (738') - 2	
D								140	5200' (738') - 2¼	
	1¾							165		

CHANGES: Lighting.

© JEPPESEN, 2000, 2009. ALL RIGHTS RESERVED.

MMCU/CUU
GEN DIV P A ROBERTO
FIERRO VILLALOBOS INTL

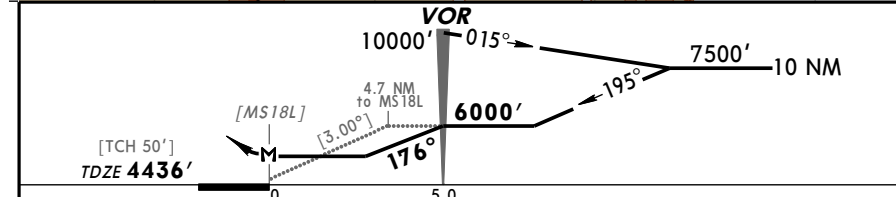
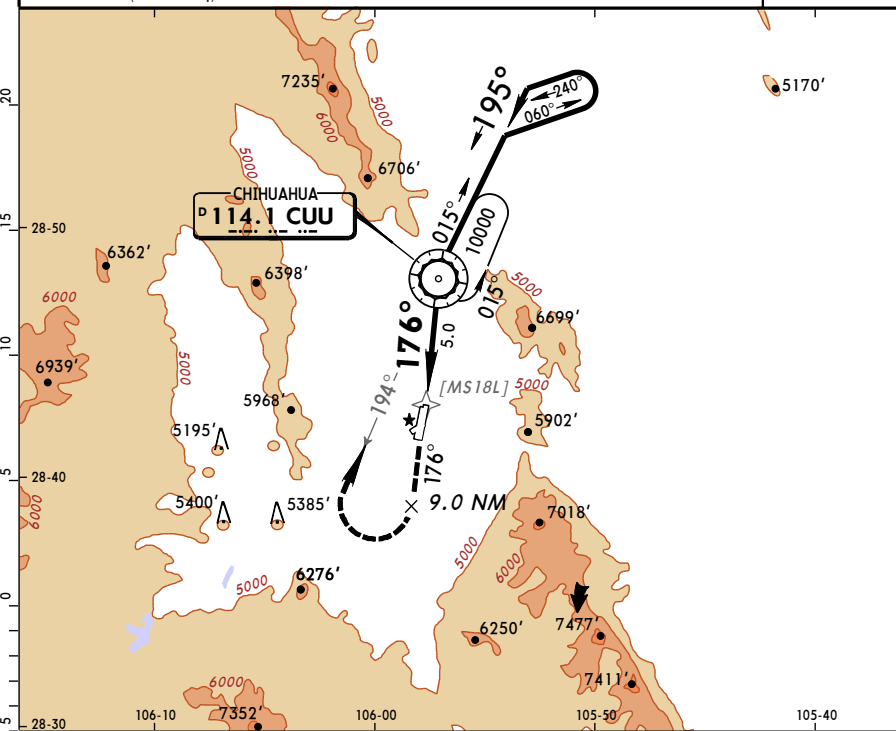
JEPPesen
10 JUL 09 (13-3)


CHIHUAHUA, MEXICO
VOR Rwy 18L

*ATIS		*CHIHUAHUA Approach (R)		*CHIHUAHUA Tower	
127.9		121.0		118.4	
VOR CUU	Final Apch Crs	Minimum Alt	MDA(H)	Apt Elev	TDZE
114.1	176°	6000' (1564')	5200' (764')	4462'	4436'

MISSED APCH: If visual contact not established climb outbound on CUU VOR R-176 to 5700', RIGHT teardrop turn within 11 NM to CUU VOR at the minimum holding altitude.

Alt Set: MB (IN on req) TDZ Elev: 152 MB Trans level: FL 195 Trans alt: 18500' MSA CUU VOR



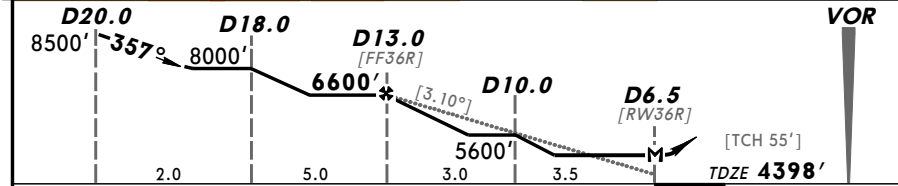
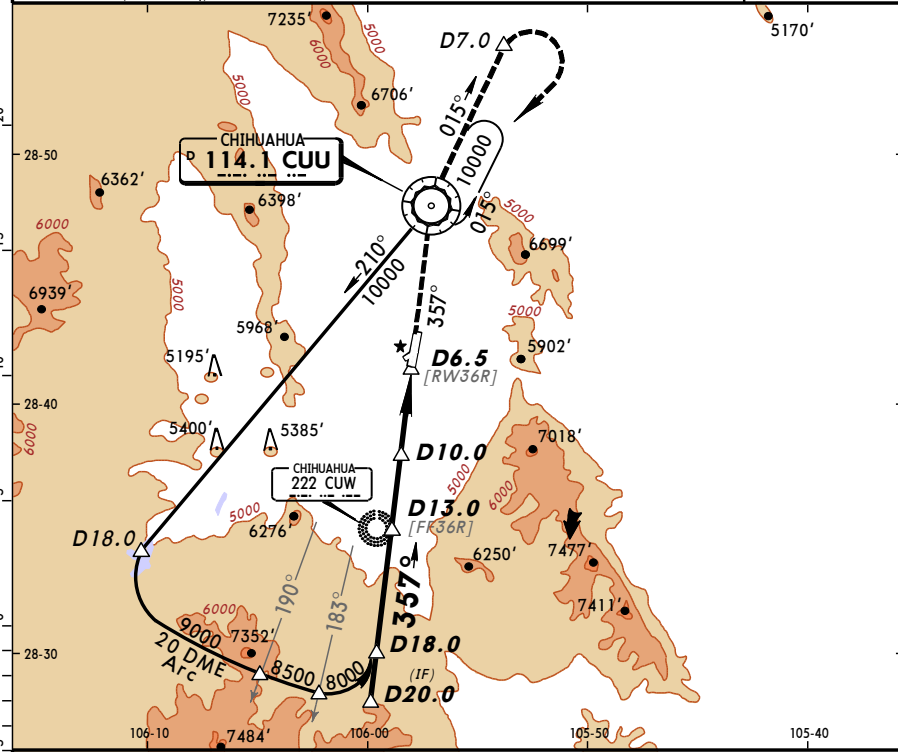
Gnd speed-Kts		70	90	100	120	140	160	REIL PAPI-L		5700'  on 114.1 R-176	CUU
Descent angle [3.00°]		372	478	531	637	743	849				
VOR to MAP		5.0	4:17	3:20	3:00	2:30	2:09	1:53			
STRAIGHT-IN LANDING RWY 18L								CIRCLE-TO-LAND			
MDA(H) 5200' (764')								Max Kts	MDA(H)		
A	1						90	5260' (798') - 1			
B							120	5260' (798') - 1¼			
C	2						140	5260' (798') - 2¼			
D	2¼						165	5260' (798') - 2½			

CHANGES: Lighting.

© JEPPESEN, 2000, 2009. ALL RIGHTS RESERVED.

MMCU/CUU
GEN DIV P A ROBERTO
FIERRO VILLALOBOS INTL
10 JUL 09 (13-4)
CHIHUAHUA, MEXICO
VOR DME 1 Rwy 36R

*ATIS 127.9		*CHIHUAHUA Approach (R) 121.0		*CHIHUAHUA Tower 118.4	
VOR CUU 114.1	Final Apch Crs 357°	Minimum Alt D13.0 6600' (2202')	MDA(H) 5060' (662')	Apt Elev 4462' TDZE 4398'	
MISSED APCH: Climb to CUU VOR on R-177, continue climb outbound on CUU VOR R-015 to D7.0, make teardrop turn to the RIGHT within 10 NM to the minimum holding altitude.					
Alt Set: MB (IN on req) TDZ Elev: 151 MB Trans level: FL 195 Trans alt: 18500'					MSA CUU VOR



Gnd speed-Kts	70	90	100	120	140	160		ALS-I	CUU
Descent angle [3.10°]	384	494	548	658	768	878		REIL PAPI	on 114.1
MAP at D6.5									R-177

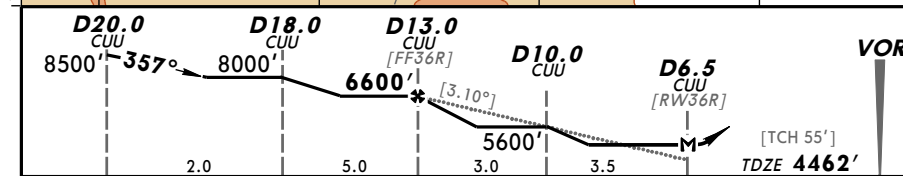
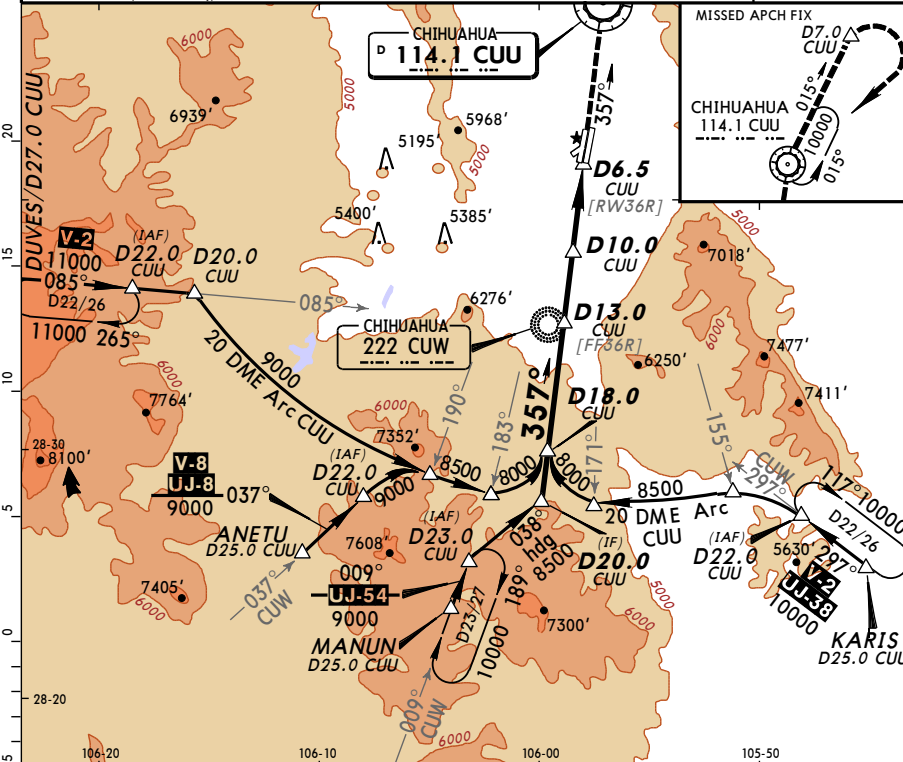
STRAIGHT-IN LANDING RWY 36R			CIRCLE-TO-LAND		
MDA(H) 5060' (662')			MDA(H)		
A	1	ALS out	90	5200' (738') - 1	
B			120		
C	1½		140	5200' (738') - 2	
D	1¾		165	5200' (738') - 2¼	

CHANGES: Lighting.

© JEPPESEN, 2000, 2009. ALL RIGHTS RESERVED.

MMCU/CUU
GEN DIV P A ROBERTO
FIERRO VILLALOBOS INTL
10 JUL 09 (13-5)
CHIHUAHUA, MEXICO
VOR DME 2 Rwy 36R

*ATIS 127.9		*CHIHUAHUA Approach (R) 121.0		*CHIHUAHUA Tower 118.4	
VOR CUU 114.1	Final Apch Crs 357°	Minimum Alt D13.0 CUU 6600' (2138')	MDA(H) 5060' (598')	Apt Elev 4462' TDZE 4462'	
MISSED APCH: Climb to CUU VOR on R-177, continue climb outbound on CUU VOR R-015 to D7.0 CUU, make teardrop turn to the RIGHT within 10 NM to the minimum holding altitude.					
Alt Set: MB (IN on req) TDZ Elev: 153 MB Trans level: FL 195 Trans alt: 18500'					MSA CUU VOR



Gnd speed-Kts	70	90	100	120	140	160		ALS-I	CUU
Descent angle [3.10°]	384	494	548	658	768	878		REIL PAPI	on 114.1
MAP at D6.5 CUU									R-177

STRAIGHT-IN LANDING RWY 36R			CIRCLE-TO-LAND		
MDA(H) 5060' (598')			MDA(H)		
A	1	ALS out	90	5200' (738') - 1	
B			120		
C	1½		140	5200' (738') - 2	
D	1¾		165	5200' (738') - 2¼	

CHANGES: Lighting.

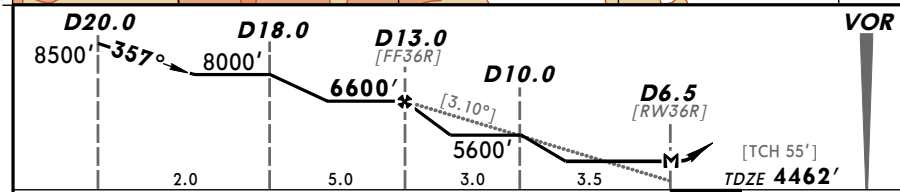
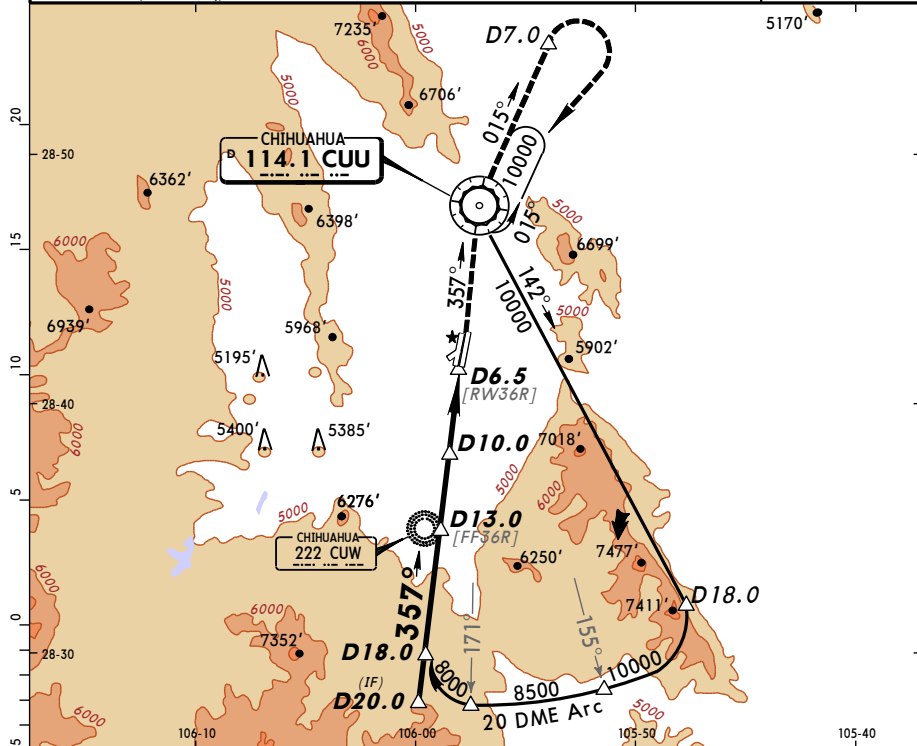
© JEPPESEN, 2000, 2009. ALL RIGHTS RESERVED.

MMCU/CUU
GEN DIV P A ROBERTO
FIERRO VILLALOBOS INTL

JEPPesen
10 JUL 09 (13-6)

CHIHUAHUA, MEXICO
VOR DME 3 Rwy 36R

*ATIS 127.9		*CHIHUAHUA Approach (R) 121.0		*CHIHUAHUA Tower 118.4	
VOR CUU 114.1	Final Apch Crs 357°	Minimum Alt D13.0 6600' (2138')	MDA(H) 5060' (598')	Apt Elev 4462' TDZE 4462'	
MISSED APCH: Climb to CUU VOR R-177, continue climb outbound on CUU VOR R-015 to D7.0, make teardrop turn to the RIGHT within 10 NM to the minimum holding altitude.					
Alt Set: MB (IN on req) TDZ Elev: 153 MB Trans level: FL 195 Trans alt: 18500'					MSA CUU VOR



Gnd speed-Kts	70	90	100	120	140	160
Descent angle [3.10°]	384	494	548	658	768	878
MAP at D6.5						
ALS F-1 REIL PAPI						
CUU on 114.1 R-177						

STRAIGHT-IN LANDING RWY 36R			CIRCLE-TO-LAND		
MDA(H) 5060' (598')					
	ALS out	Max Kts	MDA(H)		
A	1	90	5200' (738') - 1		
B		120			
C	1½	140	5200' (738') - 2		
D	1¾	165	5200' (738') - 2¼		

CHANGES: Lighting.

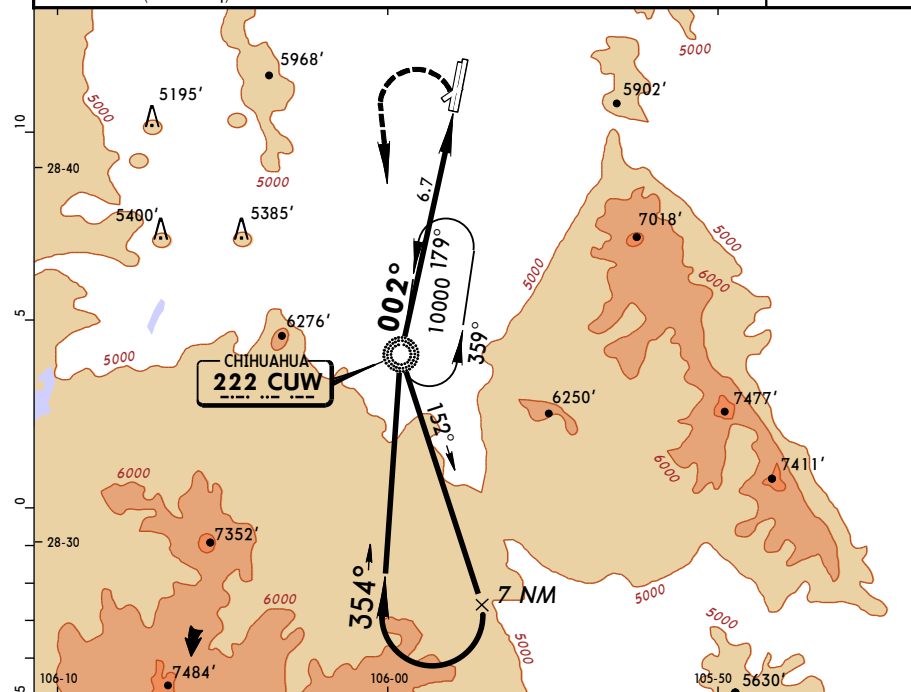
© JEPPesen, 2000, 2009. ALL RIGHTS RESERVED.

MMCU/CUU
GEN DIV P A ROBERTO
FIERRO VILLALOBOS INTL

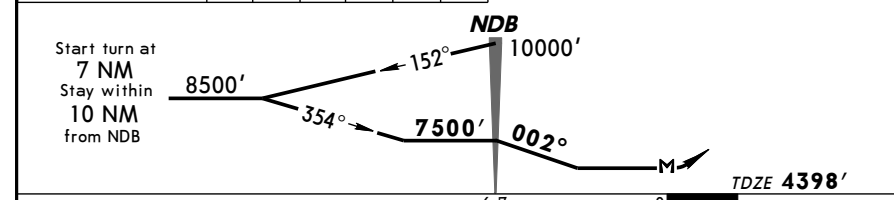
JEPPesen
10 JUL 09 (16-1)

CHIHUAHUA, MEXICO
NDB A Rwy 36R

*ATIS 127.9		*CHIHUAHUA Approach (R) 121.0		*CHIHUAHUA Tower 118.4	
NDB CUW 222	Final Apch Crs 002°	Minimum Alt NDB 7500' (3102')	MDA(H) Refer to Minimums	Apt Elev 4462' TDZE 4398'	
MISSED APCH: Turn LEFT and proceed to CUW NDB climbing to the minimum holding altitude.					
Alt Set: MB (IN on req) TDZ Elev: 151 MB Trans level: FL 195 Trans alt: 18500'					MSA CUW NDB



Gnd Speed-Kts	70	90	100	120	140	160
NDB to Start Turn	7.0	6:00	4:40	4:12	3:30	2:38



Gnd Speed-Kts	70	90	100	120	140	160
NDB to MAP	6.7	5:45	4:28	4:01	3:21	2:52
ALS F-1 REIL PAPI						
CUW on 222 LT						

CIRCLE-TO-LAND					
	Max Kts	MDA(H)			
A	90				
B	120	5680' (1218') - 1¼			
C	140	5680' (1218') - 1½			
D	165	5680' (1218') - 3			

CHANGES: Lighting.

© JEPPesen, 2000, 2009. ALL RIGHTS RESERVED.