

MMCB/CVJ
 GEN MARIANO MATAMOROS

JEPPESEN

CUERNAVACA, MEXICO

10-2

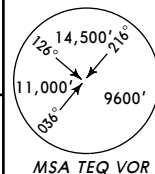
5 MAY 06

TOLUCA Approach
128.9

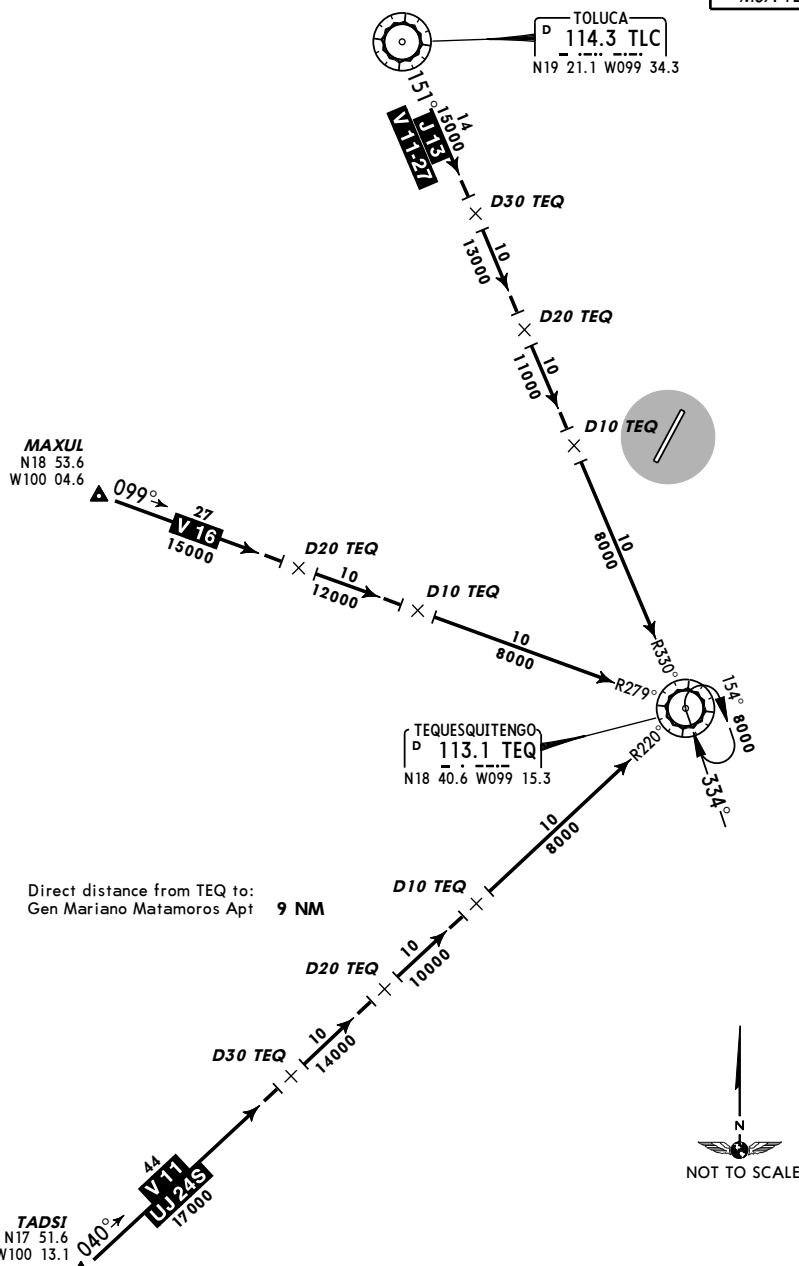
*CUERNAVACA Tower
118.35

Apt Elev
4277'

Alt Set: MB (IN on req)
 Trans level: FL 195
 Trans alt: 18500'
 Minimum altitudes ONLY
 when landing at MMCB.



LET-DOWN PROCEDURES (TRANSITION ALTITUDES)



CHANGES: TEQ renamed.

© JEPPESEN SANDERSON, INC., 2003, 2006. ALL RIGHTS RESERVED.

MMCB/CVJ
 GEN MARIANO MATAMOROS

JEPPESEN

CUERNAVACA, MEXICO

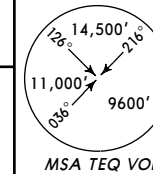
10-3

5 MAY 06

SID

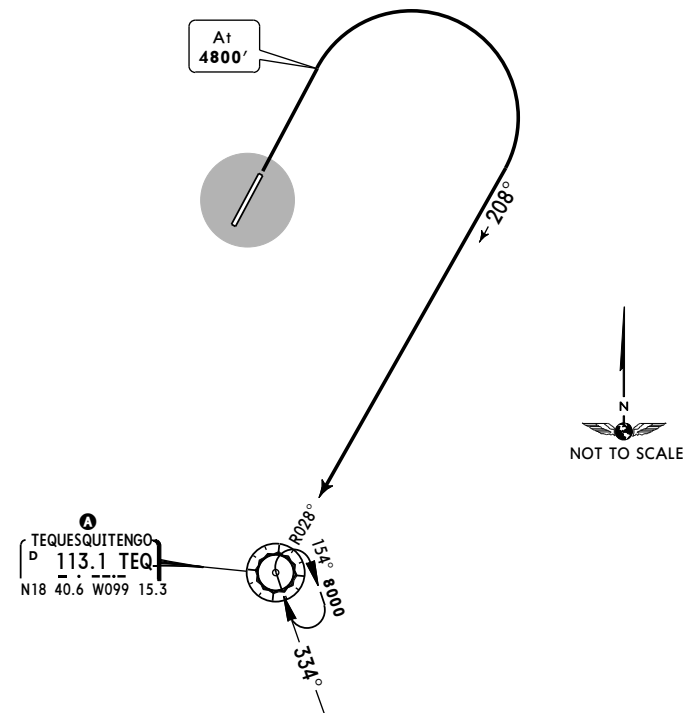
Apt Elev
4277'

Trans level: FL 195 Trans alt: 18500'



DEPARTURE RWY 02 TEQUESQUITENGO ONE ALFA (TEQ1A)

Direct distance from Gen Mariano Matamoros Apt to:
 TEQ **9 NM**



| A MINIMUM CROSSING ALTITUDE | | | |
|-----------------------------|---------|--------|-------|
| MEX | V-15 | J-21 | 11200 |
| CUA | V-24 | UJ-24 | 7500 |
| OAX | V-16-27 | J-13 | 7500 |
| HUX | V-43 | | 7500 |
| PXM | | UJ-71 | 7500 |
| ACA | V-15E | UJ-21E | 8000 |
| ACA | V-15 | J-21 | 7900 |
| TADSI | V-11 | | 7600 |
| MAXUL | V-16 | | 8800 |
| PTJ | V-43 | | 12000 |
| TLC | V-11-27 | J-13 | 12000 |

This SID requires a minimum climb gradient of 280' per NM until reaching **6000'**.

| Gnd speed-KT | 75 | 100 | 150 | 200 | 250 | 300 |
|--------------|-----|-----|-----|-----|------|------|
| 280' per NM | 350 | 467 | 700 | 933 | 1167 | 1400 |

INITIAL CLIMB

Climb on runway heading to **4800'**. Turn RIGHT to intercept TEQ R-028 to TEQ, crossing at the MCA **A** of the assigned route or in accordance with ATC instructions.

CHANGES: Procedure title and TEQ renamed.

© JEPPESEN SANDERSON, INC., 2004, 2006. ALL RIGHTS RESERVED.

MMCB/CVJ
GEN MARIANO MATAMOROS

JEPPESEN

10-3A

5 MAY 06

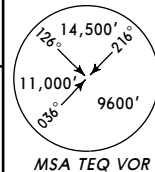
CUERNAVACA, MEXICO

SID

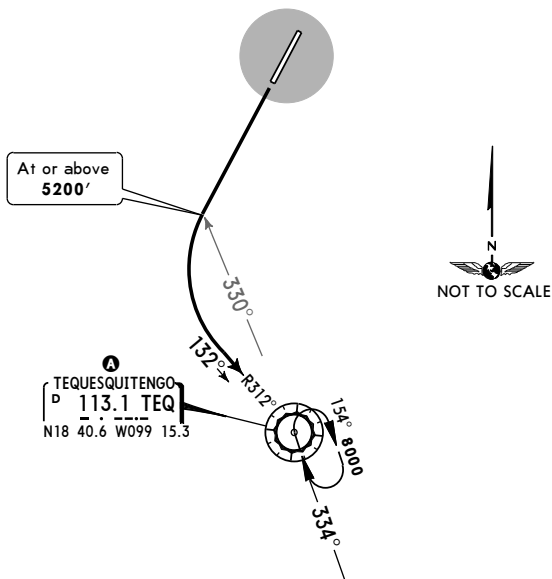
Apt Elev
4277'

Trans level: FL 195 Trans alt: 18500'

DEPARTURE RWY 20
TEQUESQUITENGO ONE BRAVO (TEQ1B)



Direct distance from Gen Mariano Matamoros Apt to:
TEQ 9 NM



MINIMUM CROSSING ALTITUDE

| | | | |
|-------|---------|--------|-------|
| MEX | V-15 | J-21 | 11200 |
| CUA | V-24 | UJ-24 | 7500 |
| OAX | V-16-27 | J-13 | 7500 |
| HUX | V-43 | | 7500 |
| PXM | | UJ-71 | 7500 |
| ACA | V-15E | UJ-21E | 8000 |
| ACA | V-15 | J-21 | 7900 |
| TADSI | V-11 | | 7600 |
| MAXUL | V-16 | | 8800 |
| PTJ | V-43 | | 12000 |
| TLC | V-11-27 | J-13 | 12000 |

This SID requires a minimum climb
gradient of 320' per NM until 7000'.

| | | | | | | |
|--------------|-----|-----|-----|------|------|------|
| Gnd speed-KT | 75 | 100 | 150 | 200 | 250 | 300 |
| 320' per NM | 400 | 533 | 800 | 1067 | 1333 | 1600 |

INITIAL CLIMB

Climb on runway heading to cross TEQ R-330 at or above 5200'. Turn LEFT and intercept TEQ R-312 to TEQ, crossing at the MCA A of the assigned route or in accordance with ATC instructions.

MMCB/CVJ
GEN MARIANO MATAMOROS

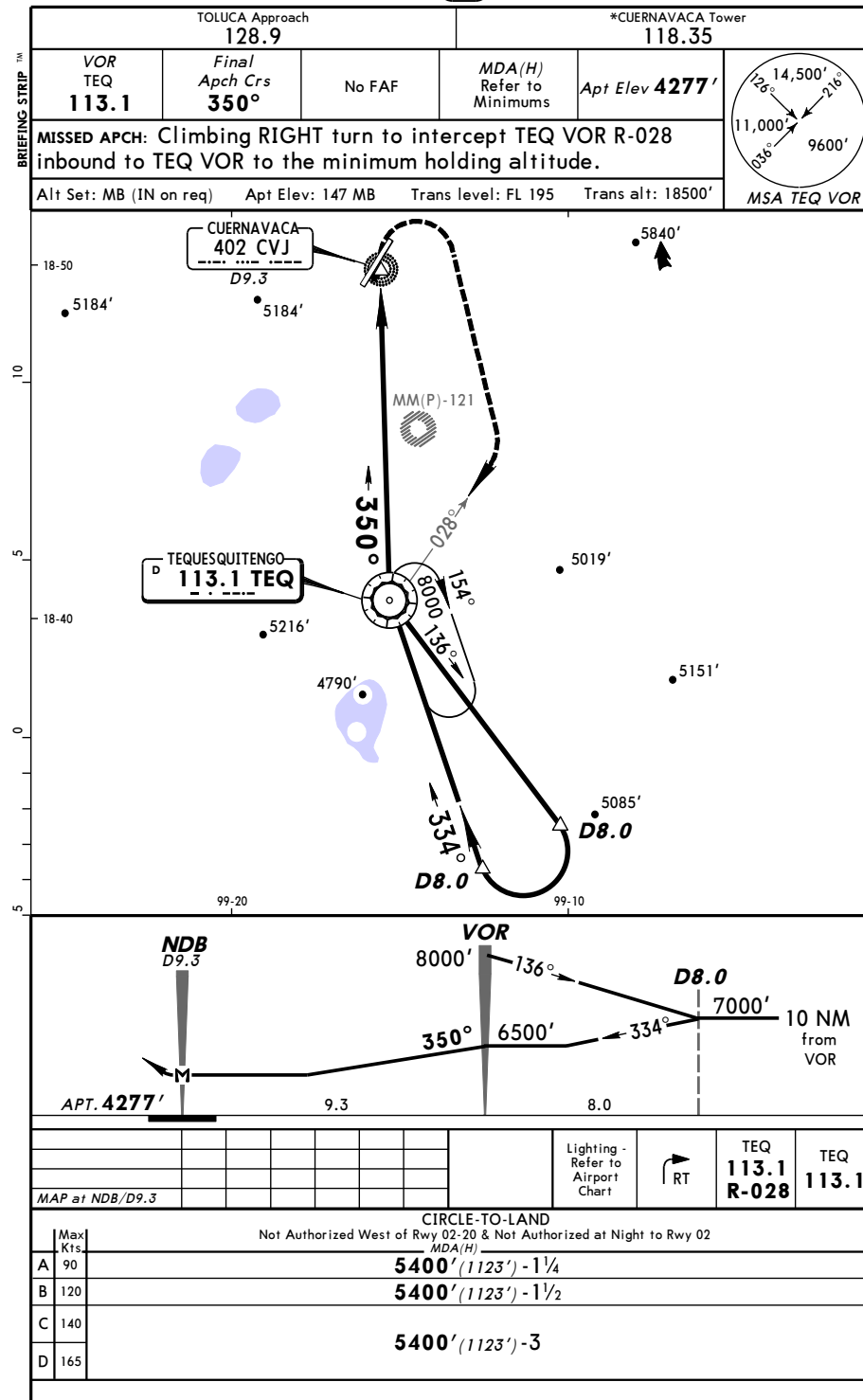
JEPPESEN

5 MAY 06

13-1

CUERNAVACA, MEXICO

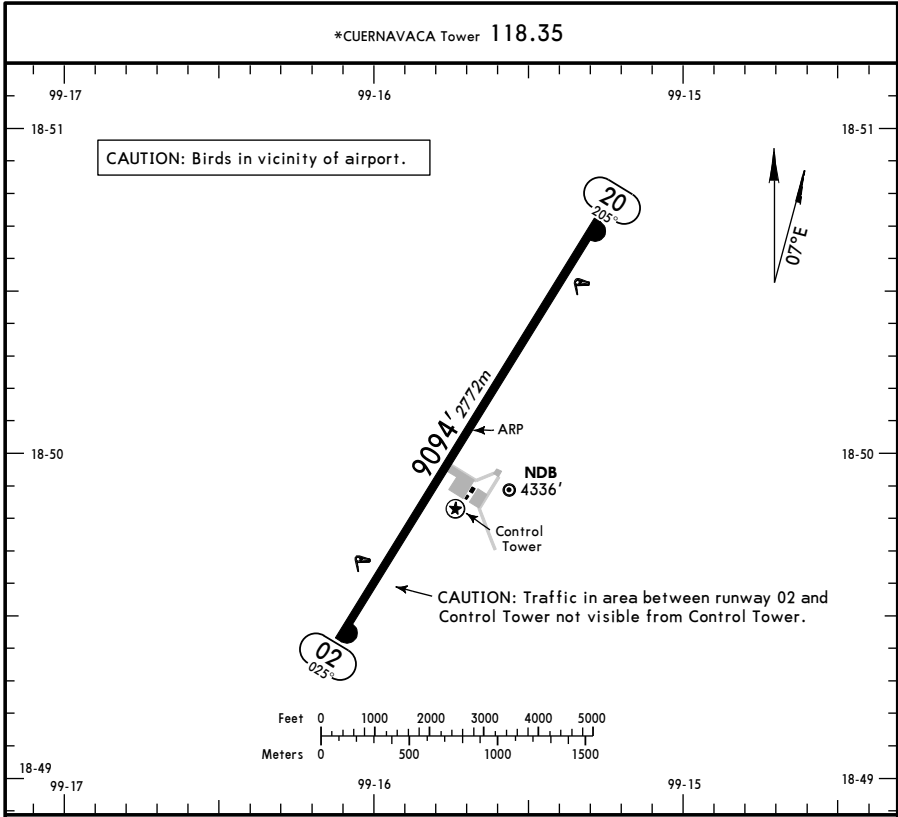
VOR DME-A



MMCB/CVJ
Apt Elev **4277'**
N18 50.1 W099 15.7

JEPPESEN
5 MAY 06 (13-1)

CUERNAVACA, MEXICO
GEN MARIANO MATAMOROS



| ADDITIONAL RUNWAY INFORMATION | | | | |
|-------------------------------|----|--------------------------|-------------|----------|
| RWY | | USABLE LENGTHS | | WIDTH |
| | | LANDING BEYOND Threshold | Glide Slope | |
| 02 | 20 | MIRL PAPI-L (angle 3.0°) | | 148' 45m |
| | | | | |
| | | | | |
| | | | | |
| | | | | |

1 Take-off Rwy 02 preferred.

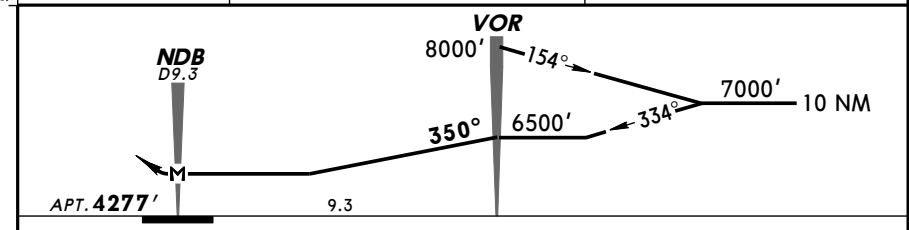
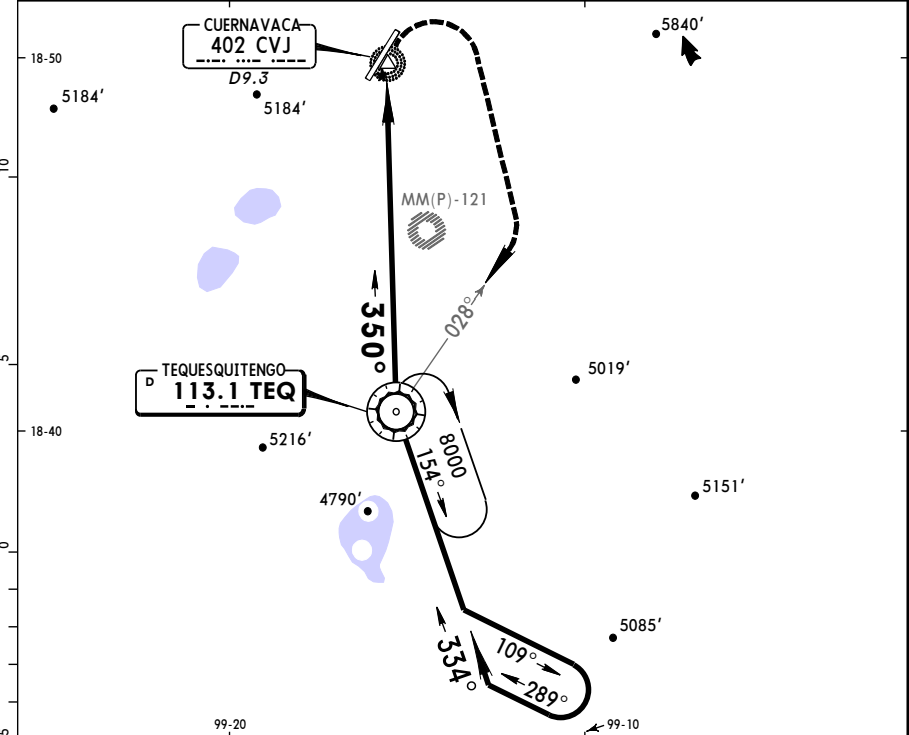
| TAKE-OFF & DEPARTURE | | | |
|----------------------|--------|--------|--|
| | Rwy 02 | Rwy 20 | |
| 1 & 2 Eng | 600-1½ | 800-2 | |
| 3 & 4 Eng | | | |

For departure procedures and MCAs see Cuernavaca Departures 10-3 and 10-3A.

MMCB/CVJ
GEN MARIANO MATAMOROS 5 MAY 06 (13-2)

CUERNAVACA, MEXICO
VOR-A

| TOLUCA Approach 128.9 | | | *CUERNAVACA Tower 118.35 | | |
|---|---------------------------|---------------------|--------------------------------|-----------------------|--|
| VOR TEQ 113.1 | Final Apch Crs 350° | No FAF | MDA(H) Refer to Minimums | Apt Elev 4277' | |
| MISSED APCH: Climbing RIGHT turn to intercept TEQ VOR R-028 inbound to TEQ VOR to the minimum holding altitude. | | | | | |
| Alt Set: MB (IN on req) | Apt Elev: 147 MB | Trans level: FL 195 | Trans alt: 18500' | MSA TEQ VOR | |



| Gnd speed-Kts | 70 | 90 | 100 | 120 | 140 | 160 | | Lighting - Refer to Airport Chart | RT | TEQ 113.1 R-028 | TEQ 113.1 |
|--------------------------------------|------|------|------|------|------|------|--|--|----|-----------------------|--------------|
| MAP at NDB/D9.3 or VOR to MAP 9.3 | 7:58 | 6:12 | 5:35 | 4:39 | 3:59 | 3:29 | | | | | |

| CIRCLE-TO-LAND | | |
|--|------------|--------------------|
| Not Authorized West of Rwy 02-20 & Not Authorized at Night to Rwy 02 | | |
| | Max Kts | MDA(H) |
| A | 90 | 5500' (1223') - 1¼ |
| B | 120 | 5500' (1223') - 1½ |
| C | 140 | |
| D | 165 | 5500' (1223') - 3 |